
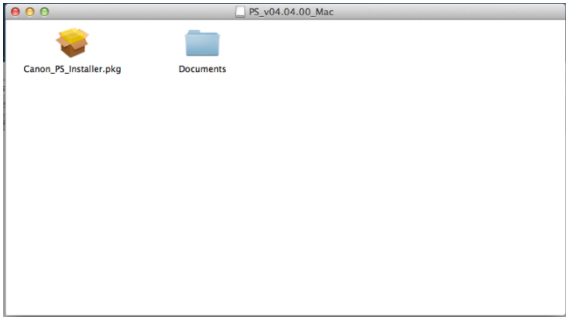
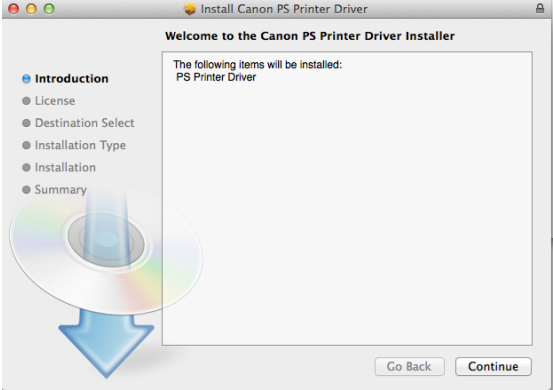


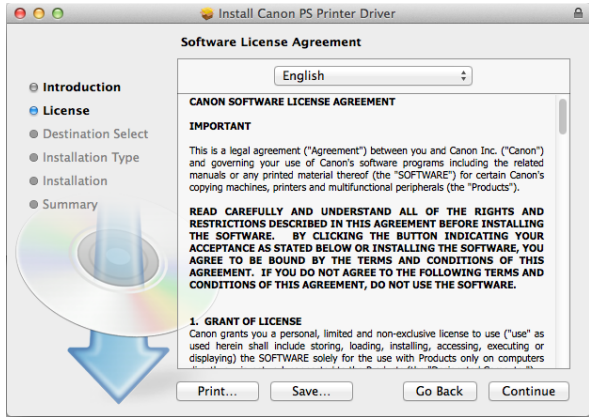
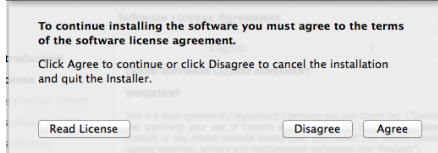
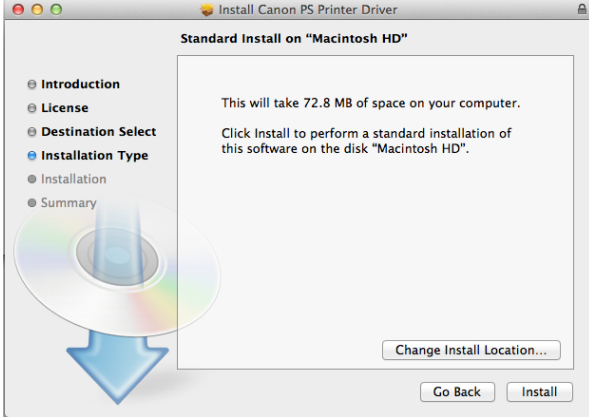
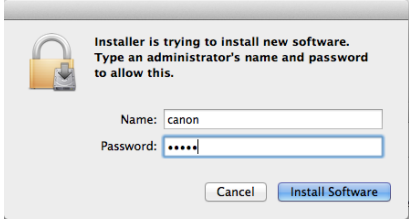
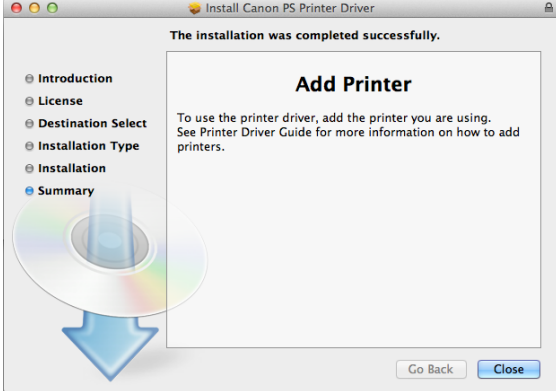


Configure MAC for Canon Secure Print

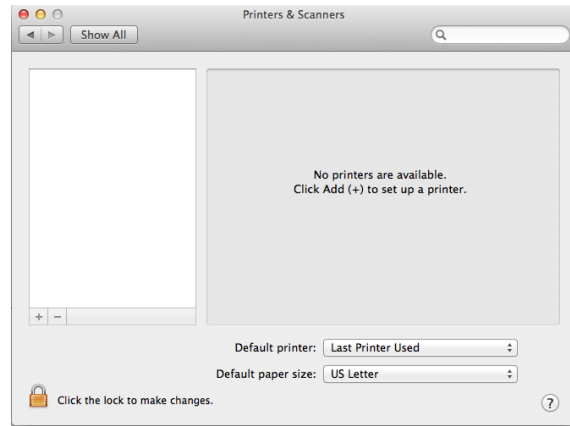
- Procedure:
 - Install Canon MAC PS Printer Drivers
 - In advanced mode add new printer:
 - Create IP Printer using connection:
 - LPD://172.16.4.25/Studentprint_mac
 - Configure printer
 - Installable options

Detailed instructions

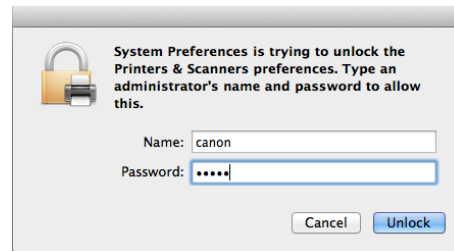
<p>Extract the Canon PS print driver files:</p> <p>Launch the PS_v04.17.0_Mac.zip file.</p> <p>Launch the extracted file PS_v04.17.0_Mac.dmg.</p>	 <p>Two file icons are shown side-by-side. The left icon is a blue square with a white document icon and the text "PS_v04.09.00_Mac.zip". The right icon is a blue square with a white document icon and the text "PS_v04.09.00_Mac.dmg".</p>
<p>Launch the installer package.</p>	 <p>A screenshot of a Mac desktop window titled "PS_v04.04.00_Mac". It shows a yellow folder icon labeled "Canon_PS_installer.pkg" and a blue folder icon labeled "Documents".</p>
<p>Click Continue.</p>	 <p>A screenshot of the "Install: Canon PS Printer Driver" window. It features a sidebar with a list of steps: Introduction (selected), License, Destination Select, Installation Type, Installation, and Summary. The main area displays "Welcome to the Canon PS Printer Driver Installer" and "The following items will be installed: PS Printer Driver". At the bottom, there are "Go Back" and "Continue" buttons.</p>

<p>Click Continue.</p>	
<p>Click Agree.</p>	
<p>Click Install.</p>	
<p>Enter the Administrator's (Mac Owner's) credentials. Click Install Software.</p>	
<p>Click Close.</p> <p>This process has installed all Canon device PPDs on the system.</p>	

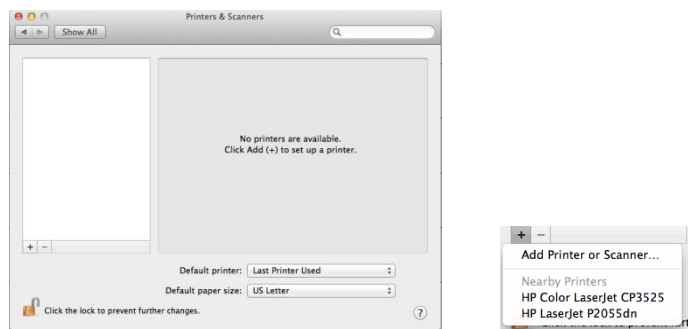
Create the Secure Input Printer:
Launch System Preferences / Printer & Scanners.



If needed, click the lock icon, enter the administrator's credentials and click Unlock.

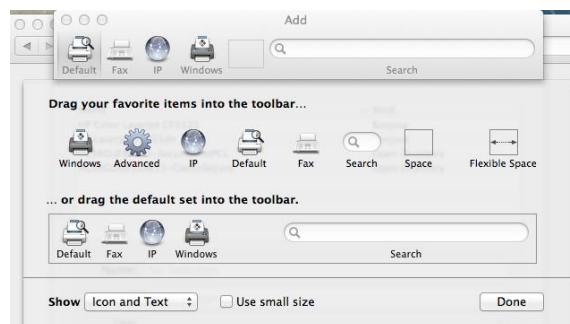
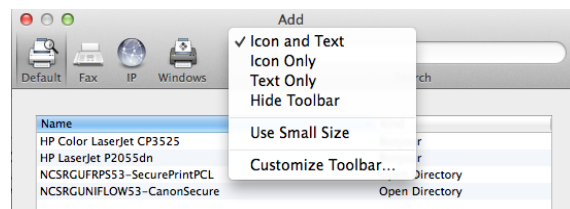


Click the + sign and choose Add Printer or Scanner from the menu:

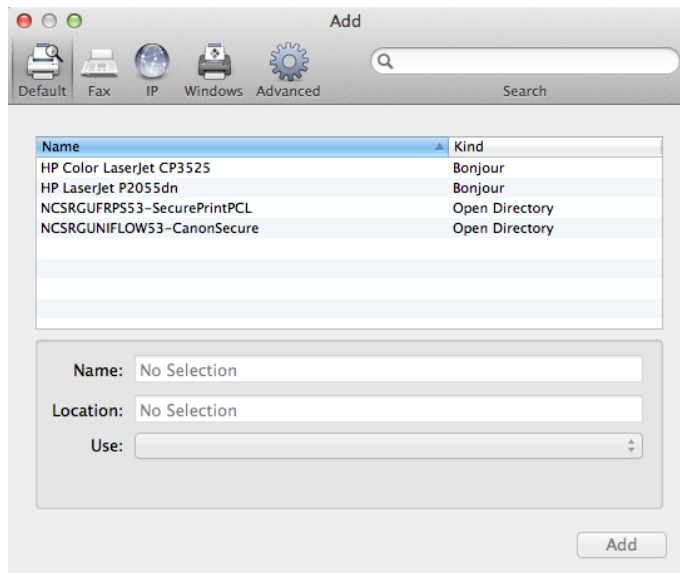


If the Advanced button is not shown Ctrl-Click on the toolbar and choose Customize Toolbar from the menu.

Drag the Advanced icon to the toolbar and click Done.



Click the Advanced icon



Choose:

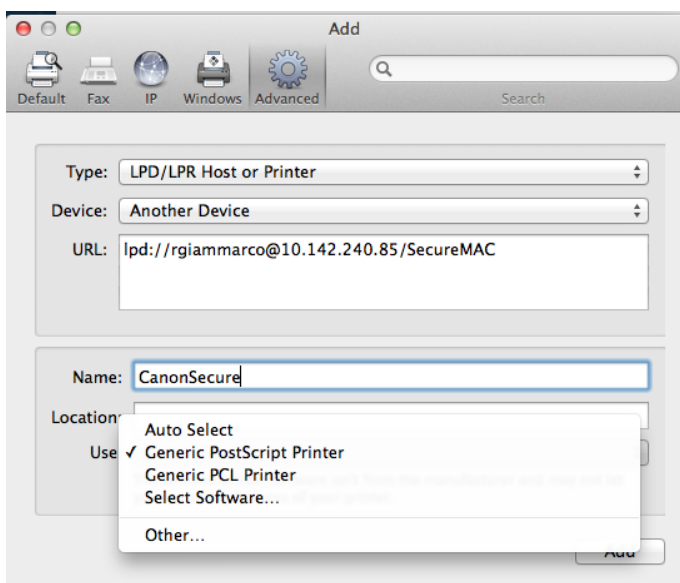
Type: **LPD/LPR Host or Printer**

Enter:

URL: **lpd://172.16.4.25/Studentprint_mac**

Name: Enter a friendly name for this printer as it will appear on the MAC
(ex: Canon Secure)

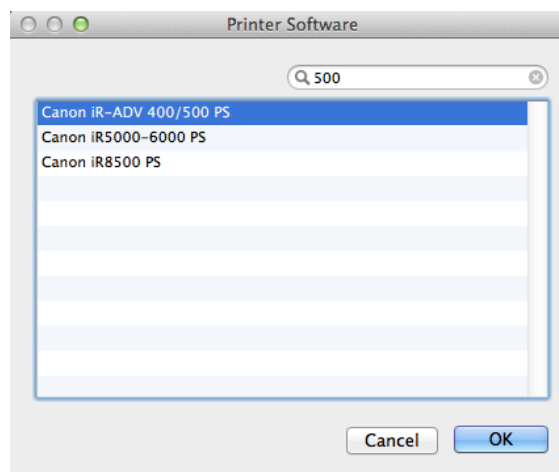
Use: Click on Select Software



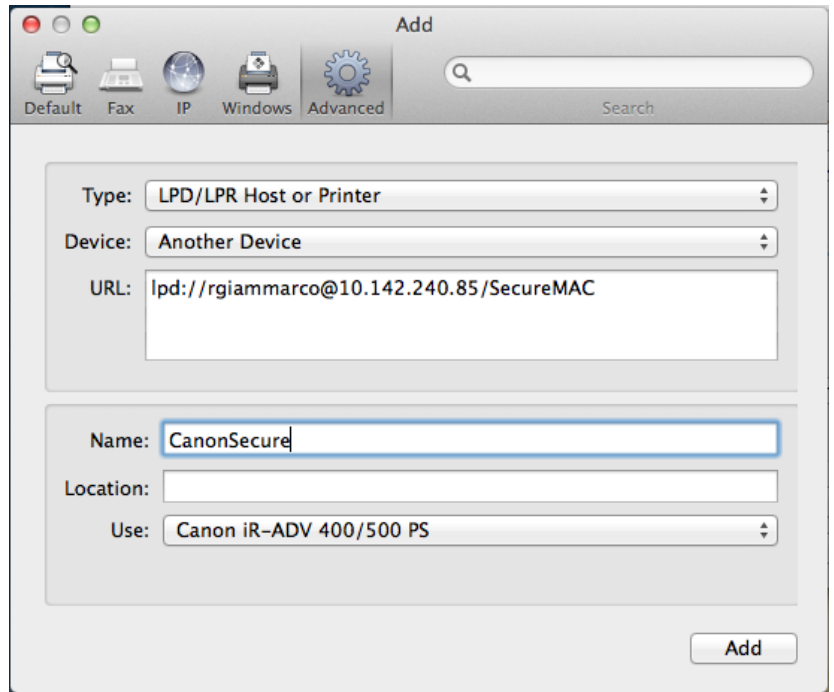
Filter the list to find your device's PPD. In this example we are finding the Canon iR-Adv 400/500 PS.

Select the device and click OK.

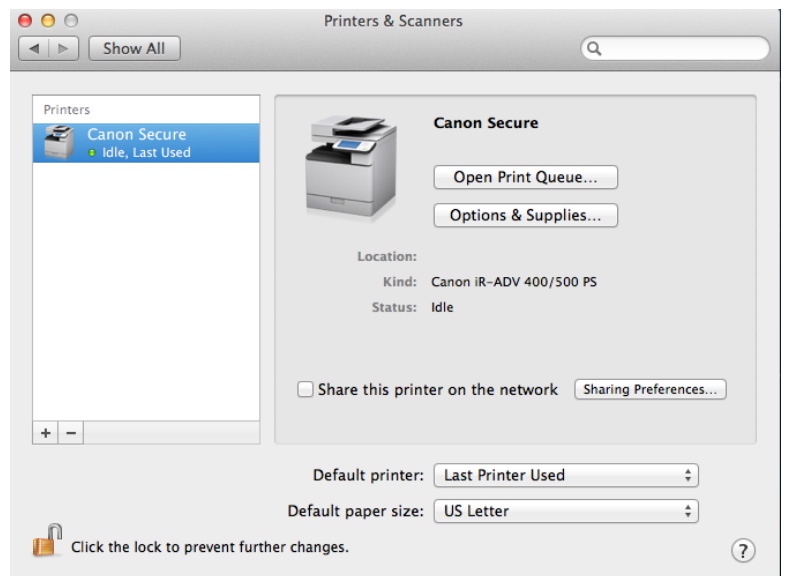
Note that the model selected in this step should be the Canon Multifunctional device that is configured with the most finishing options so the end users have all options needed at their disposal. If a print job is released to a less configured device, some finishing options may not be available at print time.



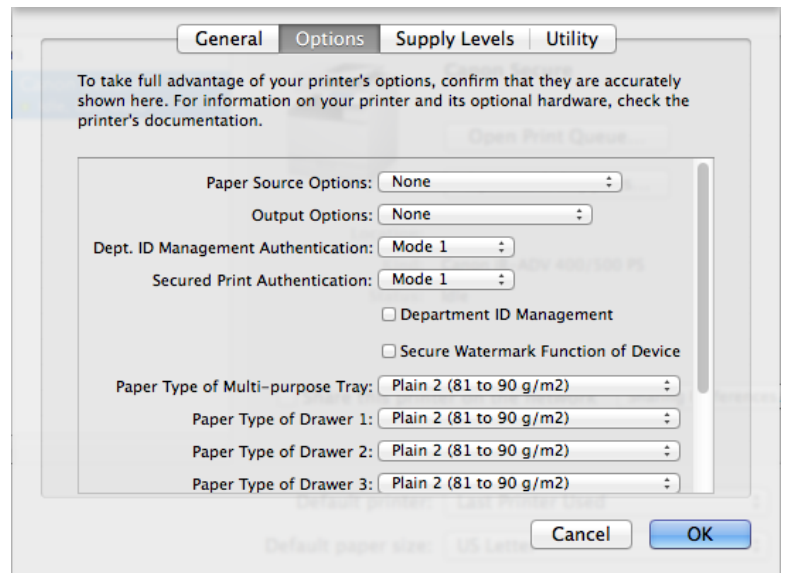
Click Add.



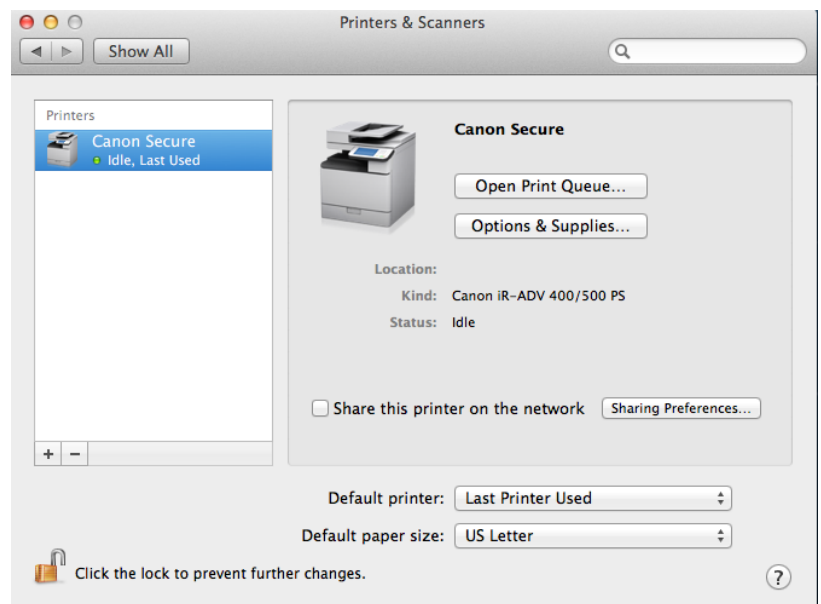
With the newly created print highlighted, click the Options & Supplies button.



Configure the settings for all features included with your **most fully configured** device. Click OK.



Close the Printers and Scanner application.



Printing from the MAC workstation:

- Open any document
- Invoke a print command
- Choose the Canon Secure printer
- In the MAC printing dialog, choose any desired print options, such as finishing functions.
- Release secure job at any Canon MFD
 - Note that the driver has been configured for the most fully configured device, therefore some devices may not be able to provide all chosen features. The job should appear in the secure print list with a caution icon should that be the case.